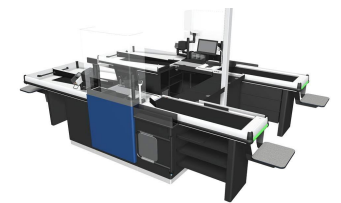
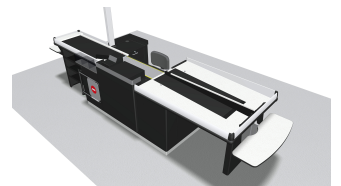
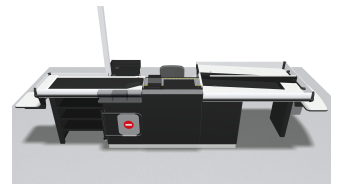
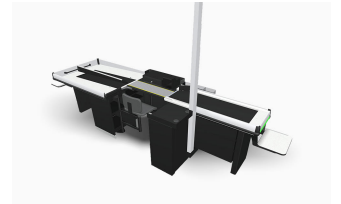
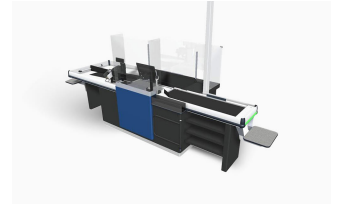


- ✓ Strømlinjeformet monteringsprosess for rask installasjon i butikk.
- ✓ Ergonomisk design for bedre komfort og produktivitet.
- ✓ Kompatibel med flere betalingssystemer.
- ✓ Modulær konstruksjon gir enkelt vedlikehold og service.
- ✓ Bedre synlighet med LED-belysning.



Technical specification

Dimensions HxLxW mm	Min. 2550x1080x1820 mm (lxwxh) Max. 6300x1200x1820
Weight kg	Min 180 Kg - Max 350 Kg
Certifications	FI
Voltage	230 V
Operating temperature	+5-30 °C
Automatic Panic Reset	yes
Packing area alternatives	belt with divider
Payment options	Cash & Card
Customisable	yes
Installation	Dry indoor conditions
Scanners	Suitable for most standard range of scanners
Operating conditions	Dry indoor conditions Temperature +5-30 °C Humidity 20-70 %