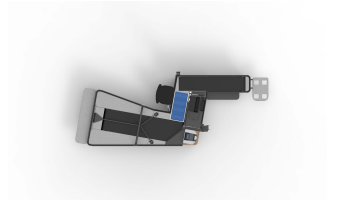
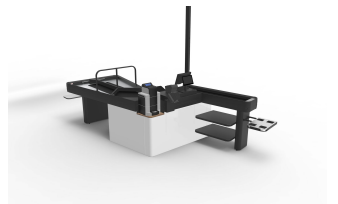
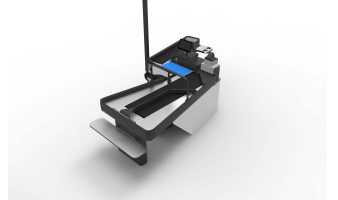
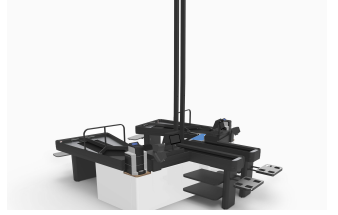


CheckMate Z

ITAB

- ✓ Enfoque frontal hacia el cliente
- ✓ Mejor visión de la línea de caja
- ✓ Un servicio de atención al cliente más rápido para los clientes de SCO
- ✓ Diseñado para una máxima ergonomía
- ✓ El diseño pequeño y recto de la entrada ayuda al cajero a agilizar la manipulación de los artículos



Technical specification

Dimensions HxLxW mm	Length: 4360 - 6000 mm Width: 1660 mm Height: 970 mm
Certifications	CE
Voltage	220-240VAC 50-60Hz Max 3A in total
Operating temperature	+10 °C to +30 °C
Customer display	Yes
Options	Yes
Packing area alternatives	Dual lane with 3rd customer functionality
Payment options	Cash & Card payment/Prepared for CG/Prepared for Safepay
Ergonomic norms	Applicable to swedish recommendations ADI566
Customisable	Yes
Installation	Indoor
Scanners	Dimensions prepared for Magellan 3200V & 3450
Operating conditions	Ambient humidity: 30-80% Storage humidity: 20-90%

ITAB HQ Sweden

Phone: +46 36 31 73 00
info@itab.com

Local contact

Please visit
www.itab.com/contact

Please note that this product sheet is for a specific product and colour. The pictures may show examples of other available colours.