

CheckMate Z

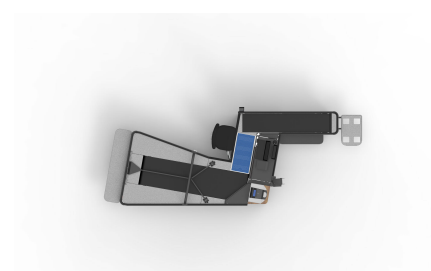
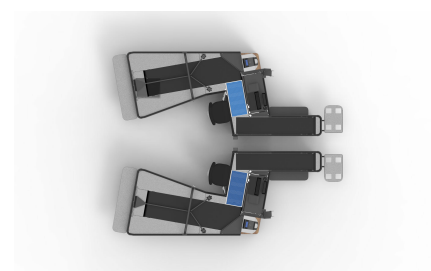
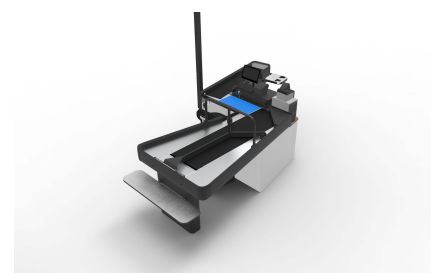
ITAB

- ✓ Approccio diretto con il consumatore.
- ✓ Migliore visione d'insieme sulla linea di cassa
- ✓ Servizio più rapido nei confronti per il consumatore SCO
- ✓ Progettata per la massima ergonomia
- ✓ Il design compatto e lineare dell'ingresso aiuta il cassiere a velocizzare la movimentazione degli articoli



Technical specification

Dimensions HxLxW mm	Length: 4360 - 6000 mm Width: 1660 mm Height: 970 mm
Certifications	CE
Voltage	220-240VAC 50-60Hz Max 3A in total
Operating temperature	+10 °C to +30 °C
Customer display	Yes
Options	Yes
Packing area alternatives	Dual lane with 3rd customer functionality Cash & Card payment/Prepared for CG/Prepared for Safepay
Payment options	Applicable to swedish recommendations ADI566
Ergonomic norms	Yes
Customisable	Indoor
Installation	Dimensions prepared for Magellan 3200V & 3450
Scanners	Ambient humidity: 30-80% Storage humidity: 20-90%
Operating conditions	



ITAB HQ Sweden
Phone: +46 36 31 73 00
info@itab.com

Local contact
Please visit
www.itab.com/contact

Please note that this product sheet is for a specific product and colour. The pictures may show examples of other available colours